



# CYBERMASTER™ 3D SHIP LOADING SOFTWARE

www.ncl-marine.com | Newcastle Marine Services Ltd.



Ship Support & Management

# ABOUT US

Newcastle Marine Services Ltd.



## Operator Support at NMS

Newcastle Marine Services is a UK-based Engineering Consultancy, specialising in the Offshore and Renewable Energy sectors. We offer a wide range of services, from concept to detailed design, research into emerging technologies, and technical support for vessel operators.

We recognize that day-to-day fleet management tasks can occupy considerable time and attention for operators. This is why we work in partnership with clients to offer bespoke solutions for vessels across the Marine Industry, making ship operations easier without compromising on quality and safety.



# CYBERMASTER™ 3D

Ship Loading Software



## Introduction

CyberMaster™3D is an advanced ship loading software, used to address daily loading and unloading operations for any vessel type.

With easy-to-use features, it's a simple yet powerful solution for all day-to-day planning activities. Advanced computation capabilities continuously provide the correct information to on-board personnel, with data presented in an advanced 3D GUI environment.

CyberMaster™3D is recognised by all major classification societies, including DNV, LRS and IRS, as well as being RINA-approved.

As of 2022, 600+ vessels use CyberMaster™ worldwide, cared for by a team of expert engineers for software development and client support.



## Basic Package

CyberMaster™3D is used for all intact stability, longitudinal strength and damage stability calculations, bound by the respective class-society rules.

### Loading Conditions & Intact Stability

- Computation of draft and intact stability
- Ship displacement & deadweight calculation
- GM & GoM calculation

### Damage Stability Module

- Graphical view of equilibrium condition of the vessel
- Stability check during intermediate stages of flooding
- Use of pre-loaded damage cases

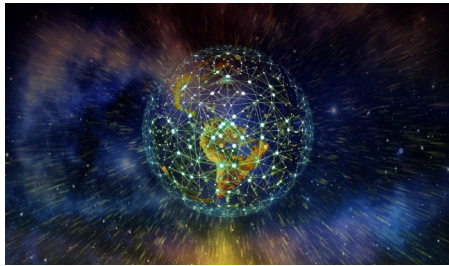
### Generation of Reports

- Executive summary of deck and tank deadweight distribution
- Loading conditions report
- Detailed intact stability reports
- Print functional reports such as stowage plan etc.



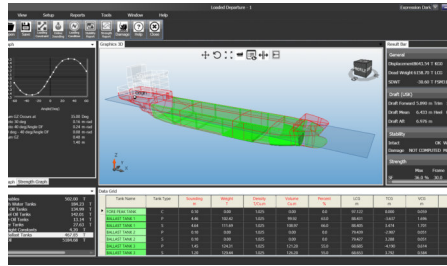
# ADDITIONAL MODULES

Customising your Software Package



## Ship-2-Shore Access

With third-party remote access via the cloud, users can receive cargo and fuel analytics, perform emergency response and upload pre-defined conditions.



## Live Tank Sounding

Real-time tank soundings give accurate tank conditions, which can then update loading conditions and stability & strength assessments.



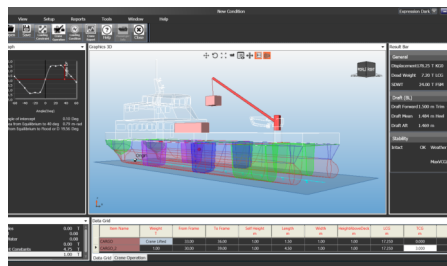
## Enhanced Report Generation

Quick generation of various reports, such as bunkering, consumables and cargo. Enables periodic review of vessel performance through analysis of vessel statistics.



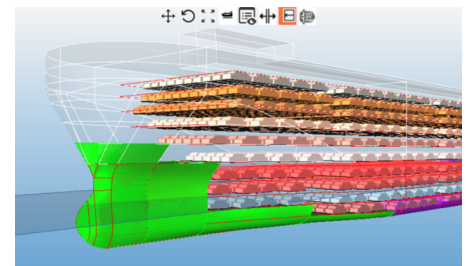
## Fleet Controller

Connect multiple vessel to operational centre via cloud services. Compare performance of all vessels across the fleet.



## Lifting Operations

Analyse stability during all crane and A-frame operations (lift, reverse, move) and produce load chart warnings.



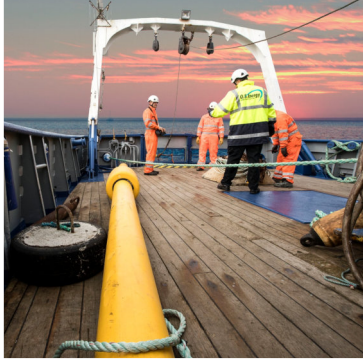
## Deck Cargo

Performs checks for maximum ship capacity, clashes, interference and aft-overhang.



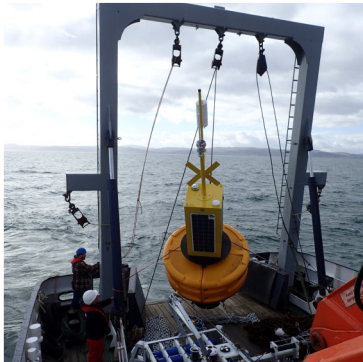
# OPERATOR BENEFITS

Client Testimonial



## Safety & Compliance

- Create and maintain a complete record of safe vessel loading for all operations.
- Ensure compliance with all existing regulations, with regards to vessel loading criteria.



*"CyberMaster is enabling us to rapidly check and decide whether the intended operations are within the safe capabilities of the vessel. As our scopes are varying and notifications times are short, using CyberMaster plays a significant role in our daily operations."* - Marc Rixe M.Sc, Master Mariner, O.S. Energy



## Corporate Responsibility

- In an increasingly HSE-driven environment, demonstrate compliance and commitment to safe operations, both to clients and the wider community.



*"Using CyberMaster has allowed us as a company to demonstrate to clients our commitment to go above-and-beyond to ensure safe operations of our vessels."* - Vincent Nuernberg, MD, O.S. Energy



# NMS, YOUR PARTNER FOR ALL SHIP MANAGEMENT & OPERATIONAL NEEDS



Email: [cybermaster@ncl-marine.com](mailto:cybermaster@ncl-marine.com)

Web: [www.ncl-marine.com/cybermaster](http://www.ncl-marine.com/cybermaster)

Address: 33 Bellingham Drive, Newcastle upon Tyne, NE12 9SZ, United Kingdom