



# CYBERMASTER™ 3D

## JACKUP STABILITY SOFTWARE

www.ncl-marine.com | Newcastle Marine Services Ltd.



Ship Support & Management

# ABOUT US

Newcastle Marine Services Ltd.



## Operator Support at NMS

Newcastle Marine Services is a UK-based Engineering Consultancy, specialising in the Offshore and Renewable Energy sectors. We offer a wide range of services, from concept to detailed design, research into emerging technologies, and technical support for vessel operators.

We recognize that day-to-day fleet management tasks can occupy considerable time and attention for operators. This is why we work in partnership with clients to offer bespoke solutions for vessels across the Marine Industry, making ship operations easier without compromising on quality and safety.



# CYBERMASTER™ 3D

Loading & Operations Software



## Introduction

CyberMaster™3D is an advanced on-board strength and stability software tool, specifically adapted for use with Jackup platforms and lifting vessels.

With easy-to-use features, it's a simple yet powerful solution for all day-to-day planning activities. Its advanced computation capabilities enable fast and live computation of key safety and stability metrics, continuously providing accurate and live information to on-board personnel.

All data is presented in an advanced GUI environment, allowing users to view vessel/platform behaviour in real-time.

CyberMaster™ software also offers specific advanced modules and features in addition to the basic package, depending on users operations.

CyberMaster™3D is recognised by all major classification societies, including DNV, LRS and IRS, as well as being RINA-approved. It can also be customised as an IACS Type-2 software, as per the respective statutory/IMO instrument.

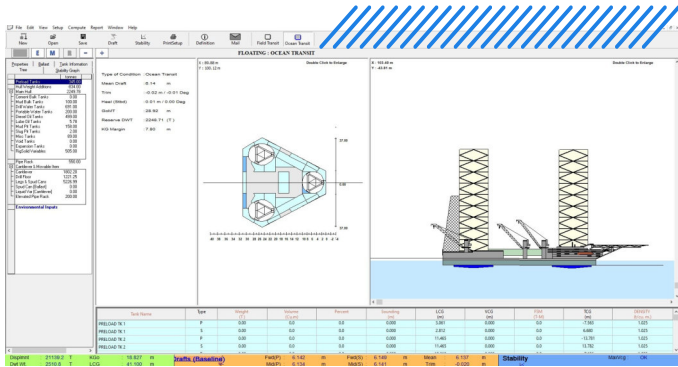


As of 2022, 600+ vessels use CyberMaster™ worldwide, cared for by a team of expert engineers for software development and client support.



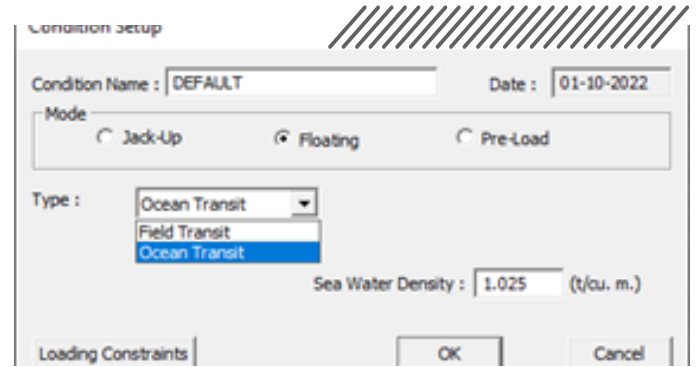
# FEATURES

## Software Package Details



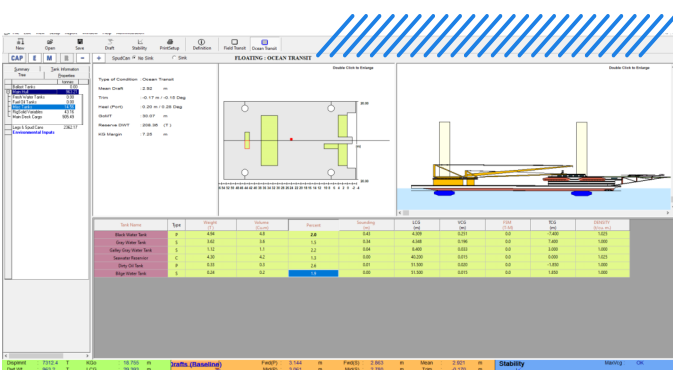
## Basic Functions

CyberMaster™3D is used for load calculation for both operational and survival modes. Using pre-load mode, allows can plan all operations to confirm it meets safety and stability criteria.



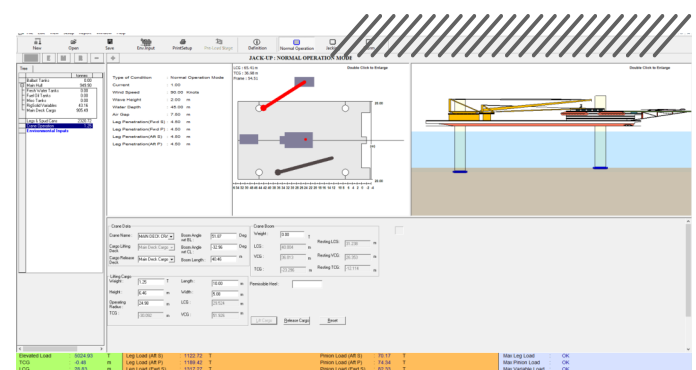
## Enhanced GUI

Enhanced display to allow real-time computation and simulation of afloat-behaviour (in transit) as well as in jacked-up/elevated conditions.



## Floating Mode

Floating mode calculates loads and moments due to various solids and liquid bulks. This includes calculation and interpolation of hydrostatic curves, righting and healing moments and allowable KG and metacentric heights.

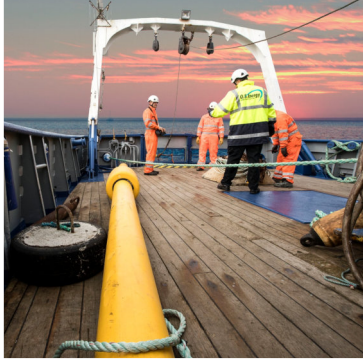


## Crane & Deck Cargo Modules

Operators can execute various operations and stowage arrangements involving both deck cargo and crane use, verifying operational limits and load-spreading arrangements.

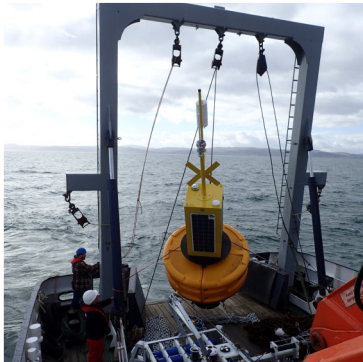
# OPERATOR BENEFITS

Client Testimonial



## Safety & Compliance

- Create and maintain a complete record of safe vessel loading for all operations.
- Ensure compliance with all existing regulations, with regards to vessel loading criteria.



*"CyberMaster is enabling us to rapidly check and decide whether the intended operations are within the safe capabilities of the vessel. As our scopes are varying and notifications times are short, using CyberMaster plays a significant role in our daily operations."* - Marc Rixe M.Sc, Master Mariner, O.S. Energy



## Corporate Responsibility

- In an increasingly HSE-driven environment, demonstrate compliance and commitment to safe operations, both to clients and the wider community.



*"Using CyberMaster has allowed us as a company to demonstrate to clients our commitment to go above-and-beyond to ensure safe operations of our vessels."* - Vincent Nuernberg, MD, O.S. Energy



# NMS, YOUR PARTNER FOR ALL SHIP MANAGEMENT & OPERATIONAL NEEDS



Email: [cybermaster@ncl-marine.com](mailto:cybermaster@ncl-marine.com)

Web: [www.ncl-marine.com/cybermaster](http://www.ncl-marine.com/cybermaster)

Address: 33 Bellingham Drive, Newcastle upon Tyne, NE12 9SZ, United Kingdom